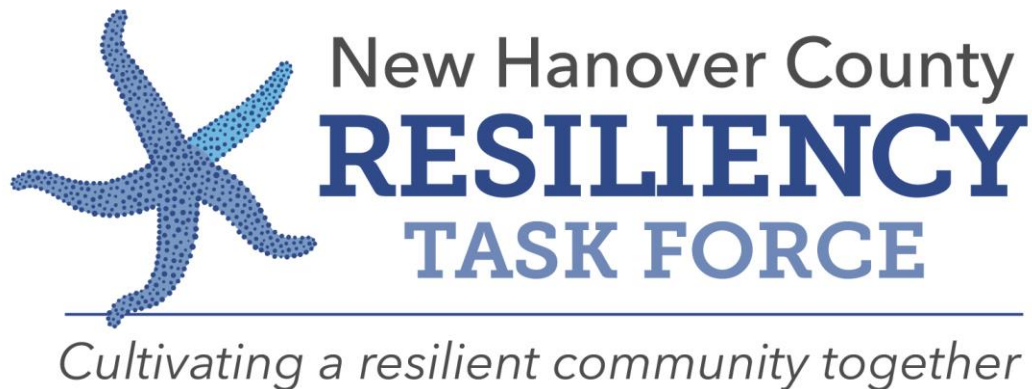


# **Mental and Behavioral Health Implications of the Perfect Storm: Hurricane Florence, COVID, and the Summer of George Floyd**

Mebane Boyd, MSW, LCSW

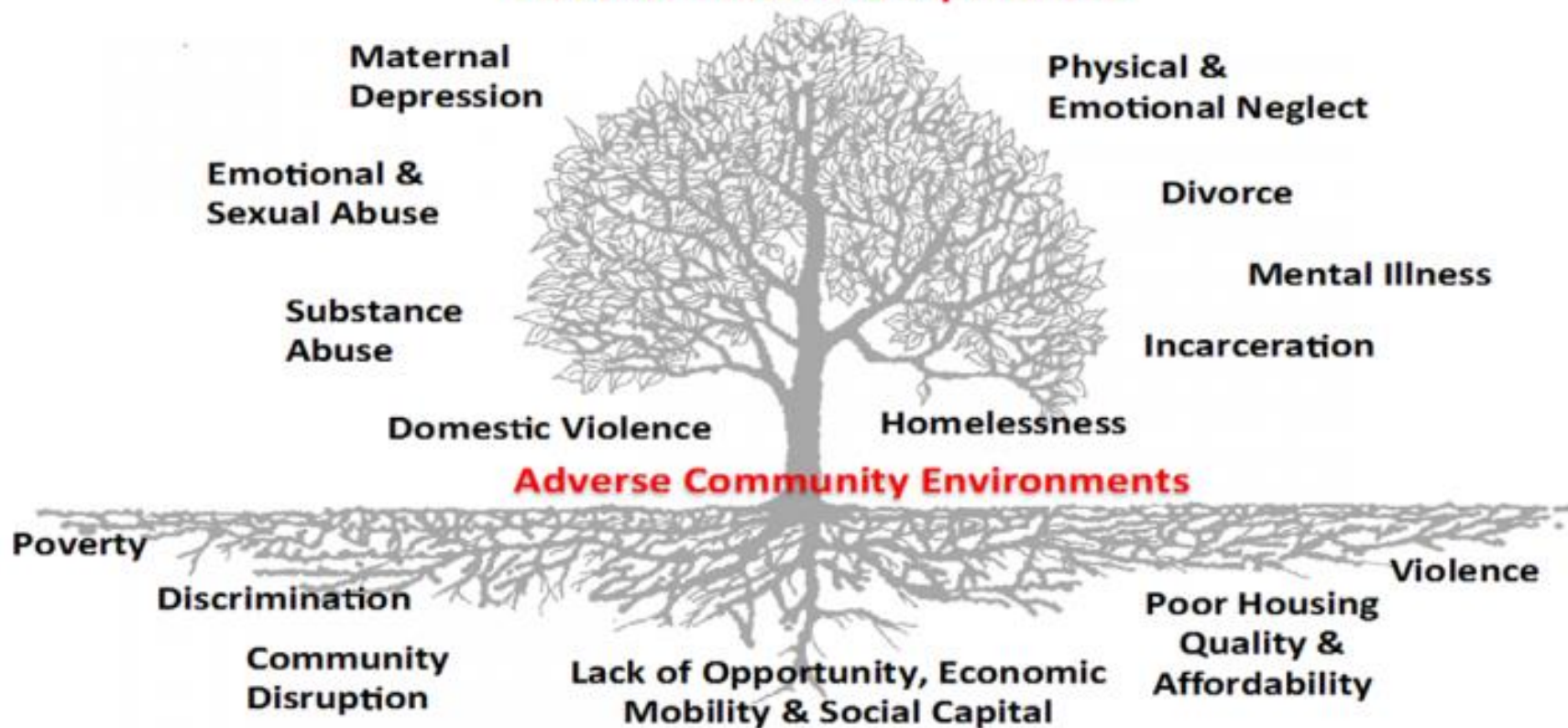
Director, New Hanover County Resiliency Task Force



[NHCbouncesback.org](http://NHCbouncesback.org)

## The Pair of ACEs

### Adverse Childhood Experiences



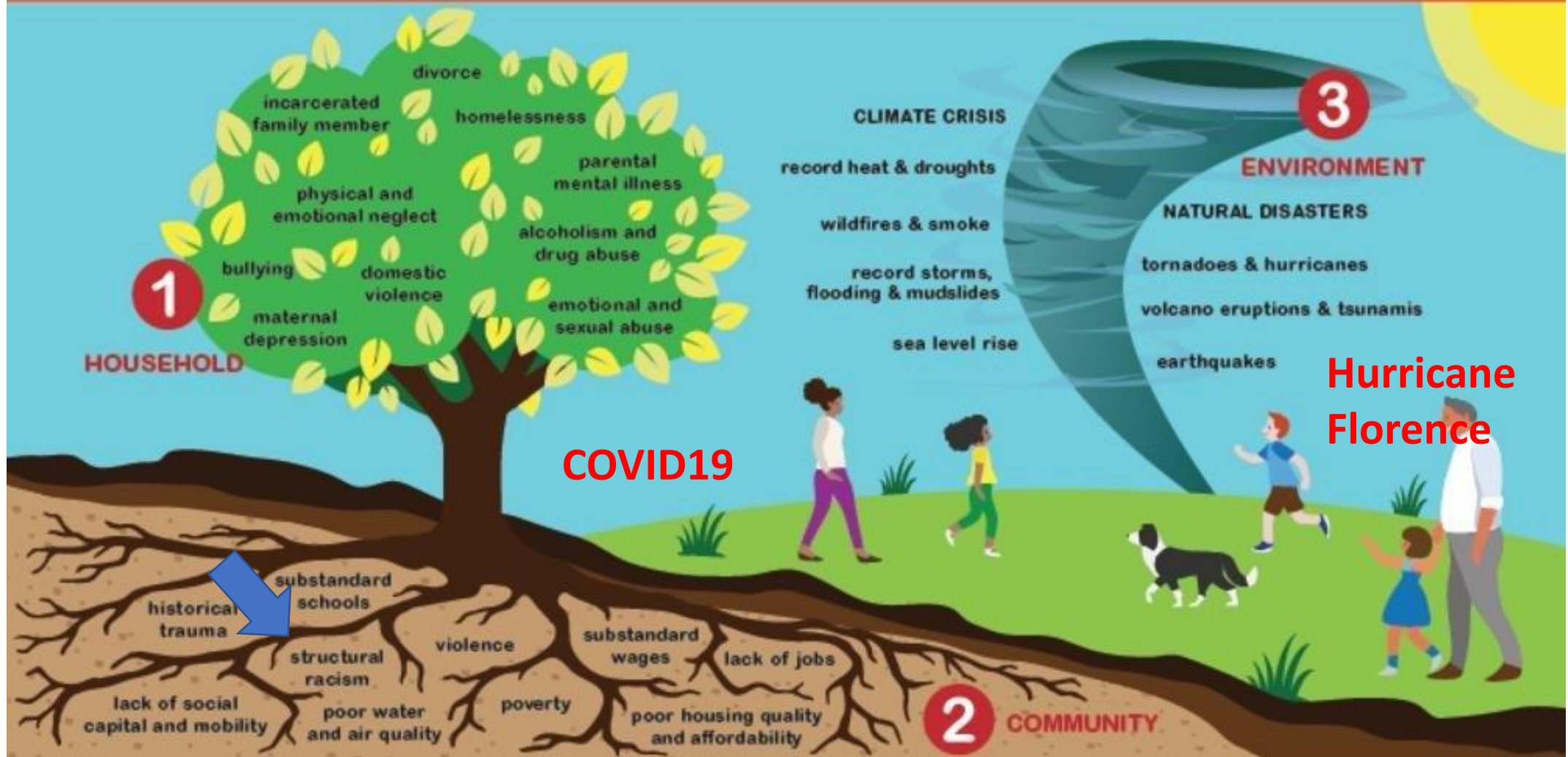
Ellis, W., Dietz, W. (2017) A New Framework for Addressing Adverse Childhood and Community Experiences: The Building Community Resilience (BCR) Model. *Academic Pediatrics*. 17 (2017) pp. S86-S93. DOI information: 10.1016/j.acap.2016.12.011



This work is licensed under the CC-BY-NC-SA 4.0 License. To view a copy of the license, visit <https://creativecommons.org/licenses/by-nc-sa/4.0/>. Noncommercial use of this material is allowed, including modification, with attribution to the license holder: Building Community Resilience, Redstone Global Center for Prevention and Wellness, Milken Institute School of Public Health, George Washington University. Visit [go.gwu.edu/BCR](http://go.gwu.edu/BCR) for the original work.

# 3 Realms of ACEs

ACEs Connection accelerates the global movement to prevent and heal adverse childhood experiences (ACEs), and supports communities to work collaboratively to solve our most intractable problems. Left unaddressed, toxic stress from ACEs harms children and families, organizations, systems and communities, and reduces the ability of individuals and entities to respond to stressful events with resiliency. The ACEs in these three realms intertwine throughout people's lives, and affect the viability of organizations, systems and communities.







## Historic and Generational trauma

- Wilmington's Ugly History of Racism
- 1898 Massacre
- Never resolved, hidden from population

# 2019 Needs Assessment

- 1) Addressing Intersection of Culture and Trauma
- 2) Better Connection of Families to Services
- 3) Providing and Sustaining Support to Organizations towards becoming Trauma-Informed
- 4) Creating a Sequence of Activities to Move from Awareness to Action
- 5) Addressing Workforce Stress
- 6) Creating a Common Language around Trauma
- 7) Strategic Planning and Creating Logic Models



## 2 years post- Hurricane Florence

- 864 students (K-12) eligible for McKinney-Vento (Homeless) services
- Over 152 homes on waitlist or under construction with local rebuilding ministries
- 582 people on caseload for case-management services



What are we  
doing now?

**“You can’t pour from an empty cup.”**

We know that significant mental health needs didn't show up until 4-9 months after Hurricane Florence.

Bracing for impact post-COVID and the Trauma of Exposed Racial Trauma:

- Schools in the fall
- Increased over-doses, substance abuse counseling needs
- Lining up community gatherings for conversations with law enforcement – trusted members/leaders from community of color to lead
- Child abuse
- Domestic violence





Taking Care  
of the  
Provider First

# Connection Matters

- Value of collaboration and relationships
- Setting the tone of our work together
- Creating Safe Spaces
- Dialog for conversations going forward
  - Recent discussions with Wilmington Police Department, NHC Sheriff's Office



# CLEAR: Community Linking and Educating Against Racism

Private group

- About
- Discussion**
- Announcements
- Rooms
- Members
- Events
- Photos
- Group Insights
- Watch Party
- Moderate Group
- Group Quality

Search this group 🔍



Joined ▾ ✓ Notifications ➔ Share ... More



Connecting people of New Hanover County to education, resources and organizations leading the way forward to racial equity

Write Post Create Room Photo/Video More



Write something...

Photo/Video Create Room Watch Party ...

POPULAR TOPICS IN POSTS Manage X

- Community Perspe... News (8)
- Events (7) Resources (7) Education (5)
- Requests (2) Training and Film ...
- Community Needs ...

